

CROP CONDITION & DEVELOPMENT STAGES

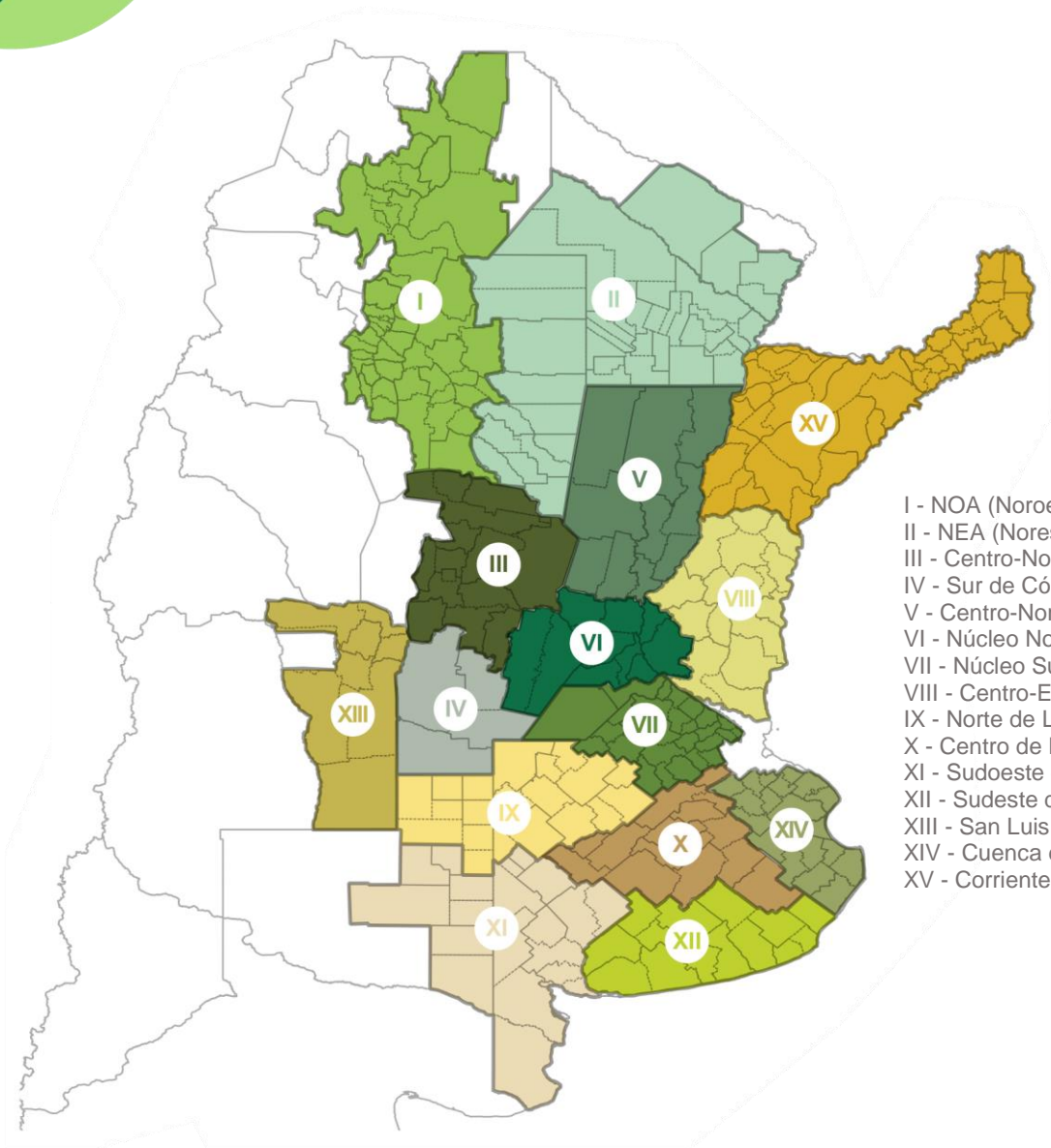
JANUARY, 4
2018



BUENOS AIRES GRAIN EXCHANGE
DEPARTMENT OF AGRICULTURAL
ESTIMATES

ISSN 2591-4715

DEPARTMENT & REGIONS



- I - NOA (Noroeste Argentino)
- II - NEA (Noreste Argentino)
- III - Centro-Norte de Córdoba
- IV - Sur de Córdoba
- V - Centro-Norte de Santa Fe
- VI - Núcleo Norte
- VII - Núcleo Sur
- VIII - Centro-Este de Entre Ríos
- IX - Norte de La Pampa - Oeste de Buenos Aires
- X - Centro de Buenos Aires
- XI - Sudoeste de Buenos Aires - Sur de La Pampa
- XII - Sudeste de Buenos Aires
- XIII - San Luis
- XIV - Cuenca del Salado
- XV - Corrientes - Misiones

HEAD OF DEPARTMENT

Esteban J Copati
ecopati@bc.org.ar

CROP ANALYST

Martin López
martinlopez@bc.org.ar

COORDINATOR

Gonzalo Hermida
ghermida@bc.org.ar

SATELLITE IMAGES ANALYST

María Victoria Corte
mcorte@bc.org.ar

CROP CONDITION ANALYST

Daniela Venturino
dventurino@bc.org.ar
Wheat & Sunflower

Santiago Burrone
sburrone@bc.org.ar
Corn

Ayelén Gago
amgago@bc.org.ar
Soybean

CONTACT

Av. Corrientes 123
C1043AAB - CABA
Phone: +54 11 4515 8200 | 8300
estimacionesagricolas@bc.org.ar
Twitter: @estimacionesbc

ISSN 2591-4715

CROP CONDITION & DEVELOPMENT STAGES

Findings of the survey conducted through January 3, 2018. The areas under analysis in this report account for 90% of the crops planted area. The regional data is published once planting is complete. The national planting and harvest progress, as well as the phenological data of the crops derive from the final area projection, while the moisture and crop condition derive from the planting progress to date.

Wheat

Wheat Condition: as of January 3, 2018

| Regions | Very Poor % | Poor % | Fair % | Good % | Excellent % |
|-----------------|-------------|-------------|-------------|-------------|-------------|
| I NOA | - | - | - | - | - |
| II NEA | - | - | - | - | - |
| III Ctro N Cba | - | - | - | - | - |
| IV S Cba | - | - | - | - | - |
| V Ctro N SFe | - | - | - | - | - |
| VI Núcleo Norte | - | - | - | - | - |
| VII Núcleo Sur | - | - | - | - | - |
| VIII Ctro E ER | - | - | - | - | - |
| IX N LP-OBA | - | 20,0 | 70,0 | 10,0 | - |
| X Ctro Bs As | - | 23,0 | 62,0 | 15,0 | - |
| XI SO BA-S LP | - | 30,0 | 55,0 | 15,0 | - |
| XII SE BA | - | 8,0 | 25,0 | 67,0 | - |
| XIII San Luis | - | - | - | - | - |
| XIV Cuenca Sal | - | - | - | - | - |
| XV Others | - | - | - | - | - |
| National | - | 15,2 | 36,5 | 48,3 | 0,0 |

Wheat Moisture Condition: as of January 3, 2018

| Regions | Dry % | Poor % | Favourable % | Optimum % | Wet % |
|-----------------|----------|-------------|--------------|------------|----------|
| I NOA | - | - | - | - | - |
| II NEA | - | - | - | - | - |
| III Ctro N Cba | - | - | - | - | - |
| IV S Cba | - | - | - | - | - |
| V Ctro N SFe | - | - | - | - | - |
| VI Núcleo Norte | - | - | - | - | - |
| VII Núcleo Sur | - | - | - | - | - |
| VIII Ctro E ER | - | - | - | - | - |
| IX N LP-OBA | - | 15,0 | 50,0 | 35,0 | - |
| X Ctro Bs As | - | 20,0 | 75,0 | 5,0 | - |
| XI SO BA-S LP | - | 55,0 | 40,0 | 5,0 | - |
| XII SE BA | - | 30,0 | 60,0 | 10,0 | - |
| XIII San Luis | - | - | - | - | - |
| XIV Cuenca Sal | - | - | - | - | - |
| XV Others | - | - | - | - | - |
| National | - | 36,1 | 54,8 | 9,1 | - |

CROP CONDITION & DEVELOPMENT STAGES

Wheat Ripening: as of January 3, 2018

| Regions | | January 4, 2017 % | December 20, 2017 % | January 3, 2018 % | 2012/2017 Average % |
|-----------------|--------------|----------------------|------------------------|----------------------|------------------------|
| I | NOA | 100,0 | 100,0 | 100,0 | 100,0 |
| II | NEA | 100,0 | 100,0 | 100,0 | 100,0 |
| III | Ctro N Cba | 100,0 | 100,0 | 100,0 | 100,0 |
| IV | S Cba | 100,0 | 100,0 | 100,0 | 100,0 |
| V | Ctro N SFe | 100,0 | 100,0 | 100,0 | 100,0 |
| VI | Núcleo Norte | 100,0 | 100,0 | 100,0 | 100,0 |
| VII | Núcleo Sur | 100,0 | 100,0 | 100,0 | 100,0 |
| VIII | Ctro E ER | 100,0 | 100,0 | 100,0 | 100,0 |
| IX | N LP-OBA | 100,0 | 100,0 | 100,0 | 100,0 |
| X | Ctro Bs As | 100,0 | 100,0 | 100,0 | 100,0 |
| XI | SO BA-S LP | 100,0 | 100,0 | 100,0 | 100,0 |
| XII | SE BA | 96,0 | 90,0 | 100,0 | 95,0 |
| XIII | San Luis | 100,0 | 100,0 | 100,0 | 100,0 |
| XIV | Cuenca Sal | 100,0 | 95,0 | 100,0 | 100,0 |
| XV | Others | 100,0 | 100,0 | 100,0 | 100,0 |
| National | | 99,6 | 98,7 | 100,0 | 98,8 |

Wheat Mature: as of January 3, 2018

| Regions | | January 4, 2017 % | December 20, 2017 % | January 3, 2018 % | 2012/2017 Average % |
|-----------------|--------------|----------------------|------------------------|----------------------|------------------------|
| I | NOA | 100,0 | 100,0 | 100,0 | 100,0 |
| II | NEA | 100,0 | 100,0 | 100,0 | 100,0 |
| III | Ctro N Cba | 100,0 | 100,0 | 100,0 | 100,0 |
| IV | S Cba | 100,0 | 95,0 | 100,0 | 100,0 |
| V | Ctro N SFe | 100,0 | 100,0 | 100,0 | 100,0 |
| VI | Núcleo Norte | 100,0 | 100,0 | 100,0 | 100,0 |
| VII | Núcleo Sur | 100,0 | 97,0 | 100,0 | 100,0 |
| VIII | Ctro E ER | - | - | - | - |
| IX | N LP-OBA | 100,0 | 68,0 | 100,0 | 100,0 |
| X | Ctro Bs As | 99,0 | 54,0 | 100,0 | 90,0 |
| XI | SO BA-S LP | 93,0 | 24,0 | 95,0 | 85,0 |
| XII | SE BA | 86,0 | 25,0 | 90,0 | 80,0 |
| XIII | San Luis | - | - | - | - |
| XIV | Cuenca Sal | - | - | - | - |
| XV | Others | - | - | - | - |
| National | | 97,6 | 79,0 | 98,4 | 89,8 |

CROP CONDITION & DEVELOPMENT STAGES

Wheat Harvested: as of January 3, 2018

| Regions | | January 4, 2017 % | December 20, 2017 % | January 3, 2018 % | 2012/2017 Average % |
|-----------------|--------------|----------------------|------------------------|----------------------|------------------------|
| I | NOA | 100,0 | 100,0 | 100,0 | 100,0 |
| II | NEA | 100,0 | 100,0 | 100,0 | 100,0 |
| III | Ctro N Cba | 100,0 | 100,0 | 100,0 | 100,0 |
| IV | S Cba | 100,0 | 97,0 | 100,0 | 100,0 |
| V | Ctro N SFe | 100,0 | 100,0 | 100,0 | 100,0 |
| VI | Núcleo Norte | 100,0 | 100,0 | 100,0 | 100,0 |
| VII | Núcleo Sur | 100,0 | 100,0 | 100,0 | 100,0 |
| VIII | Ctro E ER | 100,0 | 100,0 | 100,0 | 100,0 |
| IX | N LP-OBA | 100,0 | 80,0 | 97,0 | 97,2 |
| X | Ctro Bs As | 95,0 | 70,0 | 92,0 | 86,4 |
| XI | SO BA-S LP | 90,0 | 42,0 | 72,0 | 80,0 |
| XII | SE BA | 65,0 | 15,0 | 56,0 | 54,6 |
| XIII | San Luis | 100,0 | 100,0 | 100,0 | 99,6 |
| XIV | Cuenca Sal | 100,0 | 75,0 | 95,0 | 86,8 |
| XV | Others | 100,0 | 100,0 | 100,0 | 96,8 |
| National | | 94,9 | 81,3 | 91,6 | 88,2 |

Sunflower

Sunflower Condition: as of January 3, 2018

| Regions | | Very Poor % | Poor % | Fair % | Good % | Excellent % |
|-----------------|--------------|----------------|-------------|-------------|-------------|----------------|
| I | NOA | - | - | - | - | - |
| II | NEA | 12,0 | 8,0 | 30,0 | 35,0 | 15,0 |
| III | Ctro N Cba | - | - | - | - | - |
| IV | S Cba | - | - | - | - | - |
| V | Ctro N SFe | - | 30,0 | 15,0 | 45,0 | 10,0 |
| VI | Núcleo Norte | - | - | - | - | - |
| VII | Núcleo Sur | - | - | - | - | - |
| VIII | Ctro E ER | - | - | - | - | - |
| IX | N LP-OBA | - | - | 50,0 | 50,0 | - |
| X | Ctro Bs As | - | - | - | - | - |
| XI | SO BA-S LP | - | 33,3 | 50,0 | 16,7 | - |
| XII | SE BA | - | - | 7,0 | 61,0 | 32,0 |
| XIII | San Luis | - | - | - | - | - |
| XIV | Cuenca Sal | - | - | 100,0 | - | - |
| XV | Others | - | - | - | - | - |
| National | | 1,6 | 14,0 | 33,7 | 37,2 | 13,5 |

CROP CONDITION & DEVELOPMENT STAGES

Sunflower Moisture Condition: as of January 3, 2018

| Regions | Dry % | Poor % | Favourable % | Optimum % | Wet % |
|-----------------|------------|-------------|--------------|------------|----------|
| I NOA | - | - | - | - | - |
| II NEA | 10,0 | 60,0 | 30,0 | - | - |
| III Ctro N Cba | - | - | - | - | - |
| IV S Cba | - | - | - | - | - |
| V Ctro N SFe | - | - | 80,0 | 20,0 | - |
| VI Núcleo Norte | - | - | - | - | - |
| VII Núcleo Sur | - | - | - | - | - |
| VIII Ctro E ER | - | - | - | - | - |
| IX N LP-OBA | - | 16,7 | 83,3 | - | - |
| X Ctro Bs As | - | - | - | - | - |
| XI SO BA-S LP | - | 66,7 | 33,3 | - | - |
| XII SE BA | - | 28,6 | 71,4 | - | - |
| XIII San Luis | - | - | - | - | - |
| XIV Cuenca Sal | - | 15,0 | 80,0 | 5,0 | - |
| XV Others | - | - | - | - | - |
| National | 1,4 | 36,5 | 58,2 | 3,9 | - |

Sunflower Flowerbud Stage: as of January 3, 2018

| Regions | January 4, 2017 % | December 20, 2017 % | January 3, 2018 % | 2012/2017 Average % |
|-----------------|-------------------|---------------------|-------------------|---------------------|
| I NOA | - | - | - | - |
| II NEA | 100,0 | 100,0 | 100,0 | 100,0 |
| III Ctro N Cba | - | - | - | - |
| IV S Cba | - | - | - | - |
| V Ctro N SFe | 100,0 | 100,0 | 100,0 | 100,0 |
| VI Núcleo Norte | - | - | - | - |
| VII Núcleo Sur | - | - | - | - |
| VIII Ctro E ER | - | - | - | - |
| IX N LP-OBA | 73,0 | 49,0 | 78,0 | 75,0 |
| X Ctro Bs As | - | - | - | - |
| XI SO BA-S LP | 61,0 | 12,0 | 53,0 | 57,3 |
| XII SE BA | 58,0 | 25,0 | 56,0 | 60,6 |
| XIII San Luis | - | - | - | - |
| XIV Cuenca Sal | 82,0 | 41,0 | 74,0 | 88,0 |
| XV Others | - | - | - | - |
| National | 76,1 | 53,6 | 75,1 | 72,1 |

CROP CONDITION & DEVELOPMENT STAGES

Sunflower Flowering Stage: as of January 3, 2018

| Regions | January 4, 2017 % | December 20, 2017 % | January 3, 2018 % | 2012/2017 Average % |
|-----------------|----------------------|------------------------|----------------------|------------------------|
| I NOA | - | - | - | - |
| II NEA | 100,0 | 100,0 | 100,0 | 100,0 |
| III Ctro N Cba | - | - | - | - |
| IV S Cba | - | - | - | - |
| V Ctro N SFe | 100,0 | 100,0 | 100,0 | 100,0 |
| VI Núcleo Norte | - | - | - | - |
| VII Núcleo Sur | - | - | - | - |
| VIII Ctro E ER | - | - | - | - |
| IX N LP-OBA | 35,0 | 16,0 | 40,0 | 36,6 |
| X Ctro Bs As | - | - | - | - |
| XI SO BA-S LP | 16,0 | - | 15,0 | 15,5 |
| XII SE BA | 33,0 | - | 29,0 | 35,0 |
| XIII San Luis | - | - | - | - |
| XIV Cuenca Sal | 28,0 | - | 22,0 | 25,0 |
| XV Others | - | - | - | - |
| National | 56,1 | 39,0 | 53,4 | 45,4 |

Sunflower Seed Development: as of January 3, 2018

| Regions | January 4, 2017 % | December 20, 2017 % | January 3, 2018 % | 2012/2017 Average % |
|-----------------|----------------------|------------------------|----------------------|------------------------|
| I NOA | - | - | - | - |
| II NEA | 100,0 | 93,0 | 100,0 | 100,0 |
| III Ctro N Cba | - | - | - | - |
| IV S Cba | - | - | - | - |
| V Ctro N SFe | 75,0 | 61,0 | 80,0 | 73,0 |
| VI Núcleo Norte | - | - | - | - |
| VII Núcleo Sur | - | - | - | - |
| VIII Ctro E ER | - | - | - | - |
| IX N LP-OBA | 8,0 | - | 12,0 | 10,0 |
| X Ctro Bs As | - | - | - | - |
| XI SO BA-S LP | - | - | - | - |
| XII SE BA | - | - | - | - |
| XIII San Luis | - | - | - | - |
| XIV Cuenca Sal | 3,0 | - | - | 5,0 |
| XV Others | - | - | - | - |
| National | 31,8 | 29,5 | 35,1 | 23,2 |

CROP CONDITION & DEVELOPMENT STAGES

Sunflower Mature: as of January 3, 2018

| Regions | January 4, 2017 % | December 20, 2017 % | January 3, 2018 % | 2012/2017 Average % |
|-----------------|----------------------|------------------------|----------------------|------------------------|
| I NOA | - | - | - | - |
| II NEA | 84,0 | 69,0 | 87,0 | 85,0 |
| III Ctro N Cba | - | - | - | - |
| IV S Cba | - | - | - | - |
| V Ctro N SFe | 58,0 | 42,0 | 60,0 | 56,3 |
| VI Núcleo Norte | - | - | - | - |
| VII Núcleo Sur | - | - | - | - |
| VIII Ctro E ER | - | - | - | - |
| IX N LP-OBA | - | - | - | - |
| X Ctro Bs As | - | - | - | - |
| XI SO BA-S LP | - | - | - | - |
| XII SE BA | - | - | - | - |
| XIII San Luis | - | - | - | - |
| XIV Cuenca Sal | - | - | - | - |
| XV Others | - | - | - | - |
| National | 24,0 | 21,2 | 27,9 | 17,7 |

Sunflower Harvested: as of January 3, 2018

| Regions | January 4, 2017 % | December 20, 2017 % | January 3, 2018 % | 2012/2017 Average % |
|-----------------|----------------------|------------------------|----------------------|------------------------|
| I NOA | - | - | - | - |
| II NEA | 42,0 | 15,0 | 45,0 | 42,4 |
| III Ctro N Cba | - | - | - | - |
| IV S Cba | - | - | - | - |
| V Ctro N SFe | 5,0 | 2,0 | 12,0 | 12,4 |
| VI Núcleo Norte | - | - | - | - |
| VII Núcleo Sur | - | - | - | - |
| VIII Ctro E ER | - | - | - | - |
| IX N LP-OBA | - | - | - | - |
| X Ctro Bs As | - | - | - | - |
| XI SO BA-S LP | - | - | - | - |
| XII SE BA | - | - | - | - |
| XIII San Luis | - | - | - | - |
| XIV Cuenca Sal | - | - | - | - |
| XV Others | - | - | - | - |
| National | 8,5 | 3,5 | 11,4 | 7,7 |

CROP CONDITION & DEVELOPMENT STAGES

Early Corn

Early Corn Planted: as of January 3, 2018

| Regions | | January 4, 2017 % | December 20, 2017 % | January 3, 2018 % | 2012/2017 Average % |
|-----------------|--------------|----------------------|------------------------|----------------------|------------------------|
| I | NOA | 60,0 | 3,0 | 12,0 | 30,0 |
| II | NEA | 61,0 | 4,0 | 7,0 | 33,6 |
| III | Ctro N Cba | 100,0 | 100,0 | 100,0 | 100,0 |
| IV | S Cba | 100,0 | 100,0 | 100,0 | 100,0 |
| V | Ctro N SFe | 100,0 | 100,0 | 100,0 | 100,0 |
| VI | Núcleo Norte | 100,0 | 100,0 | 100,0 | 100,0 |
| VII | Núcleo Sur | 100,0 | 100,0 | 100,0 | 100,0 |
| VIII | Ctro E ER | 100,0 | 100,0 | 100,0 | 100,0 |
| IX | N LP-OBA | 100,0 | 100,0 | 100,0 | 100,0 |
| X | Ctro Bs As | 100,0 | 100,0 | 100,0 | 100,0 |
| XI | SO BA-S LP | 100,0 | 100,0 | 100,0 | 100,0 |
| XII | SE BA | 100,0 | 100,0 | 100,0 | 100,0 |
| XIII | San Luis | 100,0 | 100,0 | 100,0 | 100,0 |
| XIV | Cuenca Sal | 100,0 | 100,0 | 100,0 | 100,0 |
| XV | Others | 100,0 | 100,0 | 100,0 | 90,0 |
| National | | 93,0 | 67,8 | 69,6 | 85,9 |

Early Corn Condition: as of January 3, 2018

| Regions | | Very Poor % | Poor % | Fair % | Good % | Excellent % |
|-----------------|--------------|----------------|-------------|-------------|-------------|----------------|
| I | NOA | - | 100,0 | - | - | - |
| II | NEA | - | - | 100,0 | - | - |
| III | Ctro N Cba | 33,3 | 50,0 | 16,7 | - | - |
| IV | S Cba | - | 42,9 | 14,3 | 42,8 | - |
| V | Ctro N SFe | 30,0 | 25,0 | 15,0 | 5,0 | 25,0 |
| VI | Núcleo Norte | 33,3 | - | 50,0 | 16,7 | - |
| VII | Núcleo Sur | - | 14,1 | 42,9 | 43,0 | - |
| VIII | Ctro E ER | - | 33,3 | 33,3 | 33,4 | - |
| IX | N LP-OBA | - | 16,7 | 33,3 | 33,3 | 16,7 |
| X | Ctro Bs As | - | 50,0 | 33,3 | 16,7 | - |
| XI | SO BA-S LP | - | 40,0 | 40,0 | 20,0 | - |
| XII | SE BA | - | - | - | 100,0 | - |
| XIII | San Luis | - | - | - | 100,0 | - |
| XIV | Cuenca Sal | - | 30,0 | 20,0 | 50,0 | - |
| XV | Others | - | - | 100,0 | - | - |
| National | | 11,3 | 21,4 | 34,0 | 30,1 | 3,3 |

CROP CONDITION & DEVELOPMENT STAGES

Early Corn Moisture Condition: as of January 3, 2018

| Regions | | Dry % | Poor % | Favourable % | Optimum % | Wet % |
|-----------------|--------------|----------|-------------|--------------|------------|----------|
| I | NOA | - | 100,0 | - | - | - |
| II | NEA | - | - | 100,0 | - | - |
| III | Ctro N Cba | - | 57,1 | 28,6 | 14,3 | - |
| IV | S Cba | - | 57,1 | 42,9 | - | - |
| V | Ctro N SFe | - | 66,7 | 33,3 | - | - |
| VI | Núcleo Norte | - | - | 71,4 | 28,6 | - |
| VII | Núcleo Sur | - | 42,9 | 57,1 | - | - |
| VIII | Ctro E ER | - | 50,0 | 50,0 | - | - |
| IX | N LP-OBA | - | 50,0 | 50,0 | - | - |
| X | Ctro Bs As | - | 42,9 | 57,1 | - | - |
| XI | SO BA-S LP | - | 80,0 | 20,0 | - | - |
| XII | SE BA | - | - | 100,0 | - | - |
| XIII | San Luis | - | - | 100,0 | - | - |
| XIV | Cuenca Sal | - | 50,0 | 50,0 | - | - |
| XV | Others | - | - | 100,0 | - | - |
| National | | - | 36,1 | 56,7 | 7,2 | - |

Early Corn Leaf Development: as of January 3, 2018

| Regions | | January 4, 2017 % | December 20, 2017 % | January 3, 2018 % | 2012/2017 Average % |
|-----------------|--------------|-------------------|---------------------|-------------------|---------------------|
| I | NOA | - | - | - | - |
| II | NEA | - | - | - | - |
| III | Ctro N Cba | 100,0 | 100,0 | 100,0 | 100,0 |
| IV | S Cba | 100,0 | 100,0 | 100,0 | 100,0 |
| V | Ctro N SFe | 100,0 | 100,0 | 100,0 | 100,0 |
| VI | Núcleo Norte | 100,0 | 100,0 | 100,0 | 100,0 |
| VII | Núcleo Sur | 100,0 | 100,0 | 100,0 | 100,0 |
| VIII | Ctro E ER | - | - | - | - |
| IX | N LP-OBA | 100,0 | 100,0 | 100,0 | 100,0 |
| X | Ctro Bs As | 100,0 | 100,0 | 100,0 | 100,0 |
| XI | SO BA-S LP | - | - | - | - |
| XII | SE BA | 100,0 | 100,0 | 100,0 | 100,0 |
| XIII | San Luis | - | - | - | - |
| XIV | Cuenca Sal | - | - | - | - |
| XV | Others | - | - | - | - |
| National | | 85,2 | 66,6 | 68,1 | 89,8 |

CROP CONDITION & DEVELOPMENT STAGES

Early Corn Pollination: as of January 3, 2018

| Regions | | January 4, 2017 % | December 20, 2017 % | January 3, 2018 % | 2012/2017 Average % |
|-----------------|--------------|----------------------|------------------------|----------------------|------------------------|
| I | NOA | - | - | - | - |
| II | NEA | - | - | - | - |
| III | Ctro N Cba | 75,0 | 55,0 | 85,0 | 96,7 |
| IV | S Cba | 81,0 | 60,0 | 95,0 | 100,0 |
| V | Ctro N SFe | 100,0 | 100,0 | 100,0 | 100,0 |
| VI | Núcleo Norte | 100,0 | 80,0 | 100,0 | 100,0 |
| VII | Núcleo Sur | 94,0 | 72,0 | 92,0 | 96,3 |
| VIII | Ctro E ER | - | - | - | - |
| IX | N LP-OBA | 80,0 | 48,0 | 78,0 | 86,3 |
| X | Ctro Bs As | 76,0 | 22,2 | 69,0 | 75,8 |
| XI | SO BA-S LP | - | - | - | - |
| XII | SE BA | 28,0 | - | 22,0 | 33,3 |
| XIII | San Luis | - | - | - | - |
| XIV | Cuenca Sal | - | - | - | - |
| XV | Others | - | - | - | - |
| National | | 66,2 | 38,6 | 55,2 | 76,0 |

Early Corn Silking: as of January 3, 2018

| Regions | | January 4, 2017 % | December 20, 2017 % | January 3, 2018 % | 2012/2017 Average % |
|-----------------|--------------|----------------------|------------------------|----------------------|------------------------|
| I | NOA | - | - | - | - |
| II | NEA | - | - | - | - |
| III | Ctro N Cba | 55,0 | 15,0 | 60,0 | 70,0 |
| IV | S Cba | 68,0 | 29,0 | 68,0 | 77,1 |
| V | Ctro N SFe | 100,0 | 90,0 | 100,0 | 100,0 |
| VI | Núcleo Norte | 82,0 | 42,0 | 81,0 | 83,3 |
| VII | Núcleo Sur | 80,0 | 33,0 | 78,0 | 81,7 |
| VIII | Ctro E ER | - | - | - | - |
| IX | N LP-OBA | 68,0 | 15,0 | 61,0 | 73,0 |
| X | Ctro Bs As | 45,0 | 5,0 | 32,0 | 50,0 |
| XI | SO BA-S LP | - | - | - | - |
| XII | SE BA | 3,0 | - | 1,0 | 5,0 |
| XIII | San Luis | - | - | - | - |
| XIV | Cuenca Sal | - | - | - | - |
| XV | Others | - | - | - | - |
| National | | 52,4 | 19,8 | 42,2 | 61,2 |

CROP CONDITION & DEVELOPMENT STAGES

Early Corn Grain Growth: as of January 3, 2018

| Regions | | January 4, 2017 % | December 20, 2017 % | January 3, 2018 % | 2012/2017 Average % |
|-----------------|--------------|----------------------|------------------------|----------------------|------------------------|
| I | NOA | - | - | - | - |
| II | NEA | - | - | - | - |
| III | Ctro N Cba | - | - | - | - |
| IV | S Cba | - | - | - | - |
| V | Ctro N SFe | 30,0 | 7,0 | 30,0 | 33,3 |
| VI | Núcleo Norte | 5,0 | - | 4,0 | 10,7 |
| VII | Núcleo Sur | 2,0 | - | 2,0 | 4,2 |
| VIII | Ctro E ER | - | - | - | - |
| IX | N LP-OBA | - | - | 1,0 | 1,5 |
| X | Ctro Bs As | - | - | - | - |
| XI | SO BA-S LP | - | - | - | - |
| XII | SE BA | - | - | - | - |
| XIII | San Luis | - | - | - | - |
| XIV | Cuenca Sal | - | - | - | - |
| XV | Others | - | - | - | - |
| National | | 3,0 | 0,3 | 2,7 | 5,9 |

Late Corn

Late Corn Planted: as of January 3, 2018

| Regions | | January 4, 2017 % | December 20, 2017 % | January 3, 2018 % | 2012/2017 Average % |
|-----------------|--------------|----------------------|------------------------|----------------------|------------------------|
| I | NOA | 40,0 | - | - | 11,2 |
| II | NEA | 32,0 | - | - | 14,8 |
| III | Ctro N Cba | 75,0 | 38,0 | 91,0 | 78,6 |
| IV | S Cba | 80,0 | 60,0 | 94,0 | 88,0 |
| V | Ctro N SFe | 60,0 | 11,0 | 23,0 | 39,6 |
| VI | Núcleo Norte | 80,0 | 56,0 | 95,0 | 87,0 |
| VII | Núcleo Sur | 90,0 | 53,0 | 83,0 | 89,4 |
| VIII | Ctro E ER | 85,0 | 15,0 | 85,0 | 74,2 |
| IX | N LP-OBA | 90,0 | 75,0 | 92,0 | 91,0 |
| X | Ctro Bs As | 95,0 | 81,0 | 93,0 | 96,6 |
| XI | SO BA-S LP | 90,0 | 85,0 | 92,0 | 92,0 |
| XII | SE BA | 91,0 | 65,0 | 93,0 | 92,6 |
| XIII | San Luis | 90,0 | 60,0 | 94,0 | 89,0 |
| XIV | Cuenca Sal | 89,0 | 66,0 | 93,0 | 95,4 |
| XV | Others | 85,0 | 27,0 | 32,0 | 60,0 |
| National | | 72,9 | 53,5 | 87,6 | 73,5 |

CROP CONDITION & DEVELOPMENT STAGES

Corn

Corn Planted: as of January 3, 2018

| Regions | January 4, 2017 % | December 20, 2017 % | January 3, 2018 % | 2012/2017 Average % |
|-----------------|----------------------|------------------------|----------------------|------------------------|
| I NOA | 50,0 | 3,0 | 12,0 | 22,7 |
| II NEA | 46,5 | 4,0 | 7,0 | 28,5 |
| III Ctro N Cba | 78,8 | 47,3 | 92,4 | 84,1 |
| IV S Cba | 86,0 | 68,0 | 95,2 | 92,7 |
| V Ctro N SFe | 72,0 | 42,2 | 50,0 | 69,6 |
| VI Núcleo Norte | 97,0 | 93,4 | 99,3 | 97,7 |
| VII Núcleo Sur | 98,5 | 90,6 | 96,6 | 97,6 |
| VIII Ctro E ER | 94,8 | 66,0 | 94,0 | 92,7 |
| IX N LP-OBA | 96,0 | 87,5 | 96,0 | 96,1 |
| X Ctro Bs As | 97,5 | 88,6 | 95,8 | 99,0 |
| XI SO BA-S LP | 96,5 | 94,0 | 96,8 | 97,8 |
| XII SE BA | 98,2 | 86,0 | 97,2 | 98,8 |
| XIII San Luis | 92,0 | 68,0 | 95,2 | 93,3 |
| XIV Cuenca Sal | 95,6 | 79,6 | 95,8 | 98,8 |
| XV Others | 91,0 | 56,2 | 59,2 | 72,6 |
| National | 82,9 | 61,2 | 77,9 | 81,2 |

First Soybean

First Soybean Planted: as of January 3, 2018

| Regions | January 4, 2017 % | December 20, 2017 % | January 3, 2018 % | 2012/2017 Average % |
|-----------------|----------------------|------------------------|----------------------|------------------------|
| I NOA | 75,0 | 4,0 | 25,0 | 55,8 |
| II NEA | 65,0 | 9,5 | 30,0 | 53,8 |
| III Ctro N Cba | 100,0 | 86,0 | 100,0 | 99,8 |
| IV S Cba | 100,0 | 97,0 | 100,0 | 100,0 |
| V Ctro N SFe | 99,0 | 90,0 | 99,0 | 94,2 |
| VI Núcleo Norte | 100,0 | 100,0 | 100,0 | 100,0 |
| VII Núcleo Sur | 100,0 | 97,5 | 100,0 | 100,0 |
| VIII Ctro E ER | 100,0 | 100,0 | 100,0 | 100,0 |
| IX N LP-OBA | 100,0 | 96,0 | 100,0 | 98,4 |
| X Ctro Bs As | - | - | - | - |
| XI SO BA-S LP | - | - | - | - |
| XII SE BA | 93,0 | 100,0 | 100,0 | 98,6 |
| XIII San Luis | - | - | - | - |
| XIV Cuenca Sal | - | - | - | - |
| XV Others | - | - | - | - |
| National | 95,7 | 84,9 | 91,3 | 93,2 |

CROP CONDITION & DEVELOPMENT STAGES

First Soybean Condition: as of January 3, 2018

| Regions | Very Poor % | Poor % | Fair % | Good % | Excellent % |
|-----------------|-------------|------------|-------------|-------------|-------------|
| I NOA | - | - | - | - | - |
| II NEA | - | - | - | - | - |
| III Ctro N Cba | - | 30,0 | 45,0 | 25,0 | - |
| IV S Cba | - | 10,0 | 60,0 | 30,0 | - |
| V Ctro N SFe | - | - | - | - | - |
| VI Núcleo Norte | - | - | 10,0 | 90,0 | - |
| VII Núcleo Sur | - | - | 42,0 | 58,0 | - |
| VIII Ctro E ER | - | - | 33,3 | 66,7 | - |
| IX N LP-OBA | - | 15,0 | 20,0 | 65,0 | - |
| X Ctro Bs As | - | - | - | - | - |
| XI SO BA-S LP | - | - | - | - | - |
| XII SE BA | - | - | 30,0 | 70,0 | - |
| XIII San Luis | - | - | - | - | - |
| XIV Cuenca Sal | - | - | - | - | - |
| XV Others | - | - | - | - | - |
| National | 0,1 | 9,0 | 38,4 | 52,6 | - |

First Soybean Moisture Condition: as of January 3, 2018

| Regions | Dry % | Poor % | Favourable % | Optimum % | Wet % |
|-----------------|------------|-------------|--------------|-------------|----------|
| I NOA | - | - | - | - | - |
| II NEA | - | - | - | - | - |
| III Ctro N Cba | - | 50,0 | 33,0 | 17,0 | - |
| IV S Cba | - | 20,0 | 80,0 | - | - |
| V Ctro N SFe | - | - | - | - | - |
| VI Núcleo Norte | - | - | 45,0 | 55,0 | - |
| VII Núcleo Sur | - | 40,0 | 60,0 | - | - |
| VIII Ctro E ER | - | 25,0 | 75,0 | - | - |
| IX N LP-OBA | - | 15,0 | 85,0 | - | - |
| X Ctro Bs As | - | - | - | - | - |
| XI SO BA-S LP | - | - | - | - | - |
| XII SE BA | - | 5,0 | 90,0 | 5,0 | - |
| XIII San Luis | - | - | - | - | - |
| XIV Cuenca Sal | - | - | - | - | - |
| XV Others | - | - | - | - | - |
| National | 0,1 | 26,8 | 61,5 | 11,6 | - |

CROP CONDITION & DEVELOPMENT STAGES

First Soybean Leaf Development: as of January 3, 2018

| Regions | | January 4, 2017 % | December 20, 2017 % | January 3, 2018 % | 2012/2017 Average % |
|-----------------|--------------|----------------------|------------------------|----------------------|------------------------|
| I | NOA | - | - | - | - |
| II | NEA | - | - | - | - |
| III | Ctro N Cba | 92,0 | 81,0 | 91,0 | 90,0 |
| IV | S Cba | 78,0 | 86,0 | 86,0 | 71,0 |
| V | Ctro N SFe | - | - | - | - |
| VI | Núcleo Norte | 100,0 | 91,0 | 100,0 | 100,0 |
| VII | Núcleo Sur | 100,0 | 88,0 | 100,0 | 100,0 |
| VIII | Ctro E ER | 97,0 | 90,0 | 98,0 | 100,0 |
| IX | N LP-OBA | 95,0 | 66,0 | 90,0 | 95,0 |
| X | Ctro Bs As | - | - | - | - |
| XI | SO BA-S LP | - | - | - | - |
| XII | SE BA | 88,0 | 77,0 | 92,0 | 90,0 |
| XIII | San Luis | - | - | - | - |
| XIV | Cuenca Sal | - | - | - | - |
| XV | Others | - | - | - | - |
| National | | 84,9 | 78,5 | 83,5 | 83,4 |

First Soybean Beginning Bloom: as of January 3, 2018

| Regions | | January 4, 2017 % | December 20, 2017 % | January 3, 2018 % | 2012/2017 Average % |
|-----------------|--------------|----------------------|------------------------|----------------------|------------------------|
| I | NOA | - | - | - | - |
| II | NEA | - | - | - | - |
| III | Ctro N Cba | 58,0 | 50,0 | 57,0 | 55,0 |
| IV | S Cba | 30,0 | 10,0 | 44,0 | 26,0 |
| V | Ctro N SFe | - | - | - | - |
| VI | Núcleo Norte | 61,0 | 33,3 | 65,0 | 58,2 |
| VII | Núcleo Sur | 63,0 | 12,0 | 55,0 | 70,0 |
| VIII | Ctro E ER | 53,0 | 13,0 | 50,0 | 46,0 |
| IX | N LP-OBA | 48,0 | 8,0 | 35,0 | 49,0 |
| X | Ctro Bs As | - | - | - | - |
| XI | SO BA-S LP | - | - | - | - |
| XII | SE BA | - | - | - | 2,9 |
| XIII | San Luis | - | - | - | - |
| XIV | Cuenca Sal | - | - | - | - |
| XV | Others | - | - | - | - |
| National | | 42,9 | 17,5 | 41,3 | 43,1 |

CROP CONDITION & DEVELOPMENT STAGES

First Soybean Beginning Pod: as of January 3, 2018

| Regions | | January 4, 2017 % | December 20, 2017 % | January 3, 2018 % | 2012/2017 Average % |
|-----------------|--------------|----------------------|------------------------|----------------------|------------------------|
| I | NOA | - | - | - | - |
| II | NEA | - | - | - | - |
| III | Ctro N Cba | 15,0 | - | 12,0 | 16,0 |
| IV | S Cba | - | - | - | - |
| V | Ctro N SFe | - | - | - | - |
| VI | Núcleo Norte | 8,0 | - | 8,0 | 4,0 |
| VII | Núcleo Sur | - | - | - | 1,2 |
| VIII | Ctro E ER | - | - | - | - |
| IX | N LP-OBA | - | - | - | 5,0 |
| X | Ctro Bs As | - | - | - | - |
| XI | SO BA-S LP | - | - | - | - |
| XII | SE BA | - | - | - | - |
| XIII | San Luis | - | - | - | - |
| XIV | Cuenca Sal | - | - | - | - |
| XV | Others | - | - | - | - |
| National | | 3,6 | - | 2,6 | 5,8 |

Second Soybean

Second Soybean Planted: as of January 3, 2018

| Regions | | January 4, 2017 % | December 20, 2017 % | January 3, 2018 % | 2012/2017 Average % |
|-----------------|--------------|----------------------|------------------------|----------------------|------------------------|
| I | NOA | 58,0 | - | 30,0 | 48,8 |
| II | NEA | 60,0 | 1,0 | 20,0 | 58,8 |
| III | Ctro N Cba | 78,0 | 45,0 | 98,0 | 93,4 |
| IV | S Cba | 85,0 | 70,0 | 93,0 | 93,4 |
| V | Ctro N SFe | 80,5 | 45,0 | 85,0 | 81,6 |
| VI | Núcleo Norte | 90,0 | 70,0 | 99,0 | 96,4 |
| VII | Núcleo Sur | 82,0 | 45,0 | 90,0 | 94,6 |
| VIII | Ctro E ER | 93,0 | 70,0 | 98,0 | 94,4 |
| IX | N LP-OBA | 85,0 | 30,0 | 94,0 | 82,2 |
| X | Ctro Bs As | - | - | - | - |
| XI | SO BA-S LP | - | - | - | - |
| XII | SE BA | 48,0 | 6,0 | 75,0 | 57,0 |
| XIII | San Luis | - | - | - | - |
| XIV | Cuenca Sal | - | - | - | - |
| XV | Others | - | - | - | - |
| National | | 76,9 | 36,6 | 78,5 | 76,2 |

CROP CONDITION & DEVELOPMENT STAGES

Soybean

Soybean Planted: as of January 3, 2018

| Regions | | January 4, 2017 % | December 20, 2017 % | January 3, 2018 % | 2012/2017 Average % |
|-----------------|--------------|----------------------|------------------------|----------------------|------------------------|
| I | NOA | 72,1 | 2,6 | 26,8 | 53,8 |
| II | NEA | 63,9 | 5,4 | 26,8 | 53,3 |
| III | Ctro N Cba | 95,5 | 67,3 | 99,4 | 98,7 |
| IV | S Cba | 98,0 | 78,5 | 98,5 | 99,2 |
| V | Ctro N SFe | 94,0 | 68,2 | 94,7 | 91,8 |
| VI | Núcleo Norte | 98,3 | 88,8 | 99,7 | 99,5 |
| VII | Núcleo Sur | 97,6 | 83,5 | 98,0 | 99,3 |
| VIII | Ctro E ER | 99,1 | 87,9 | 99,7 | 99,3 |
| IX | N LP-OBA | 96,2 | 63,3 | 98,7 | 94,5 |
| X | Ctro Bs As | - | - | - | - |
| XI | SO BA-S LP | - | - | - | - |
| XII | SE BA | 93,2 | 49,9 | 88,1 | 83,9 |
| XIII | San Luis | - | - | - | - |
| XIV | Cuenca Sal | - | - | - | - |
| XV | Others | - | - | - | - |
| National | | 92,9 | 63,5 | 87,5 | 90,3 |

CROP CONDITION & DEVELOPMENT STAGES

Vegetation Change detection map

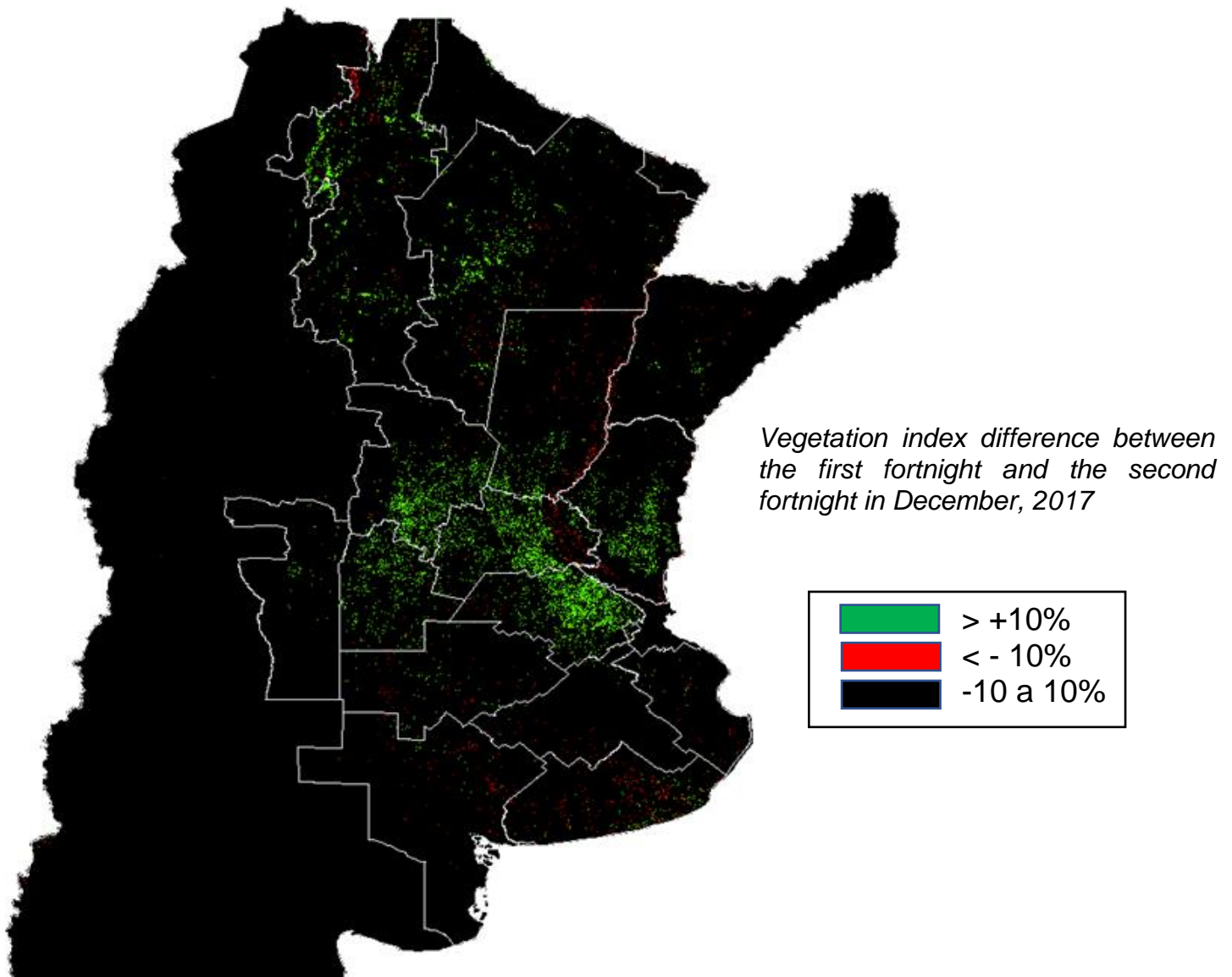
The following maps were drawn based on temporal MODIS Vegetation indices, which provided time-space comparisons of the crop condition, related to the foliar area, the photosynthesis activity and to the canopy architecture.

The index value may vary according to the soil use, condition and development of the vegetation cover, soil moisture and to regional climatic conditions.

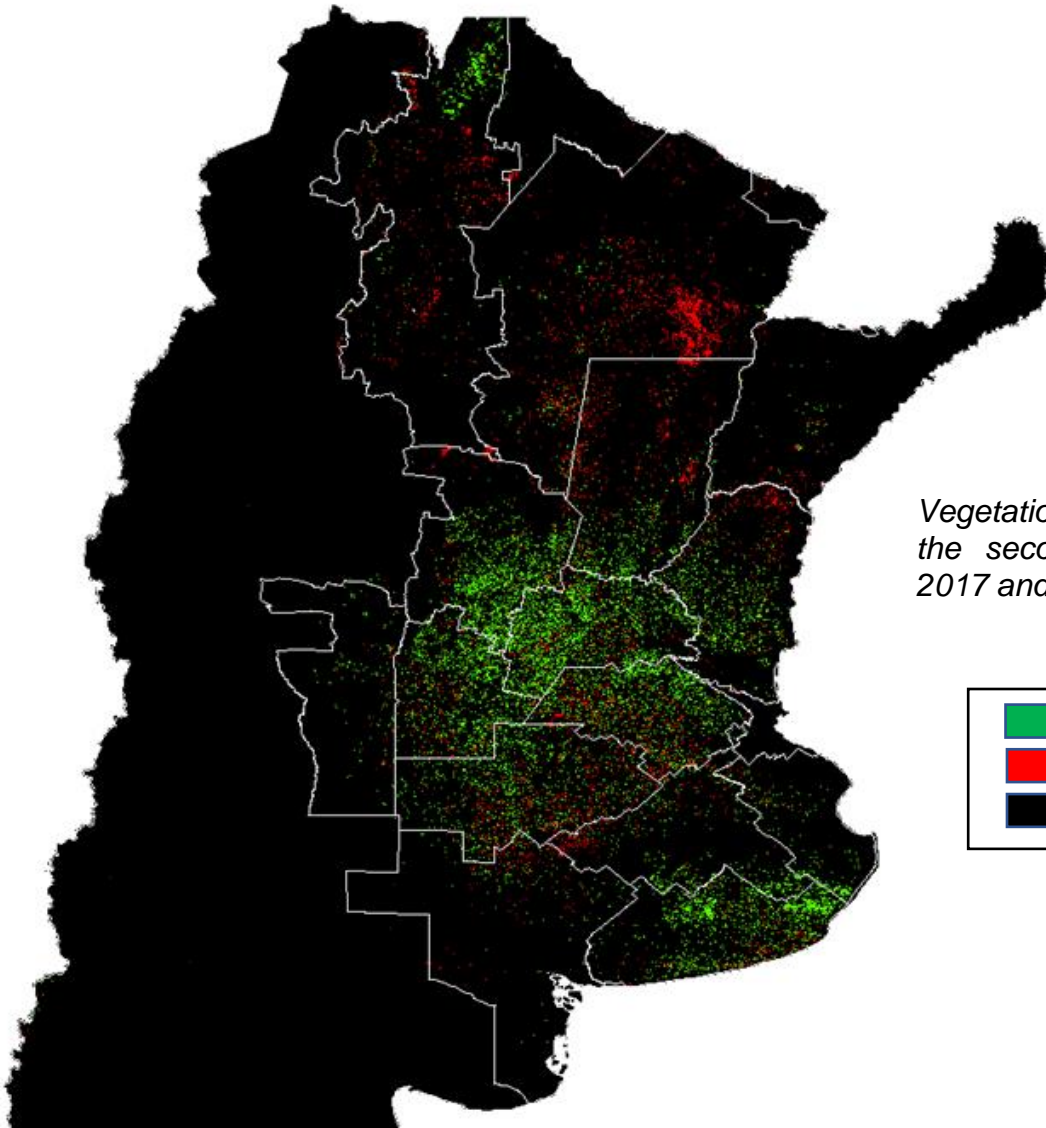
These properties have turned the green index into a valuable tool for the assessment of vegetation cover, as well as for the study of the classification and dynamics of vegetation and its phenological aspect.

The analysis not only represents variations in the crops surveyed by the Department, but also considers other coverings such as natural forest, pastures, green areas and vegetation associated with water courses.

Departing from this index, fortnightly changes were detected compared to both, the same and previous season. Red areas in maps evidence a decrease above 10% in the vegetation index, while the green areas indicate a rise above 10% of the vegetation index.



CROP CONDITION & DEVELOPMENT STAGES



Vegetation index difference between the second fortnight in December, 2017 and the same fortnight YoY

